

# Murrieta Valley High School

Exterior Renovation



November 30, 2010

## Agenda

- Overall Concept/ Scope of Work
- Signage
- Murals
- Exterior Color Scheme

# Overall Concept/ Scope of Work



## Project Scope

<b>Exterior Building Painting</b>
<b>Replacement of Red Standing Seam Roofs &amp; Trim</b>
<b>Quad &amp; Courtyards</b>
<b>Entry Drop Off Area</b>
<b>Loop Drive Area</b>
<b>Perimeter Area</b>
<b>Fullerton Entry</b>
<b>Equipment/Furniture</b>

## Renovated Entry and Courtyard Areas

- Shaded Area (combination of shelters & trees)

Existing = 8,100 square feet

New Design = 17,000 square feet

% Increase = 110 %

- Landscape Area

Existing = 2,040 square feet

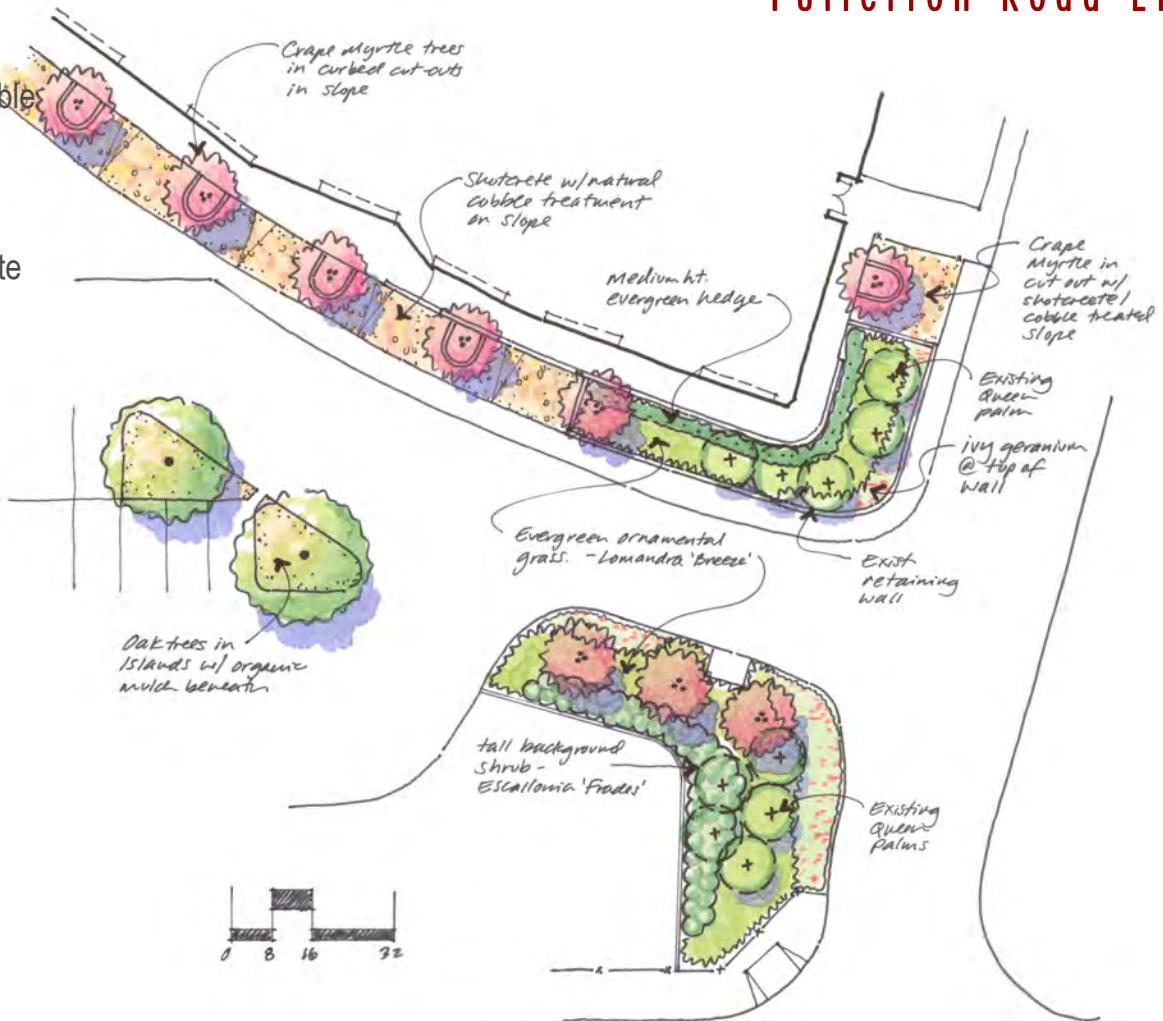
New Design = 14,300 square feet

% Increase = 600 %

## Fullerton Road Entry

### Design Approach

- ✓ Renovate Eroded Slope – Shotcrete w/ Natural Cobble Finish.
- ✓ Add Trees along Back of Building in Cut-outs.
- ✓ Replace Plantings at Retaining walls and on Opposite Slope at Driveway Entrance.



## Project Goals & Priorities

- Define the Identity of the campus
- Provide clear system of wayfinding
- Develop a timeless palette of materials and colors for buildings/hardscape/landscape
- Provide varied seating opportunities shaded/sheltered from heat and rain
- Encourage use of underutilized areas
- Define pathways & circulation routes
- Landscape quad and perimeter



## Goals & Key Points for Perimeter Improvements

- Develop a consistent IDENTITY for school
- Upgrade monument signage to provide clear wayfinding
- Landscape will be read at 40 MPH
- Utilize existing evergreen trees & build new unique plant palette





Nighthawk Way frontage



Existing sign at Nighthawk Way & Washington Ave.



Nighthawk Way frontage



Washington Ave. frontage



## Design Approach

- Remove All Chitalpa Trees & Miscellaneous Tree Species
- Remove Only Underperforming Sumac Trees
- Add Pink Flowering Crape Myrtle Trees (medium height, deciduous)
- Add Southern Live Oak (tall height evergreen)
- Low Maintenance Shrubs – Medium Height Dark Evergreen, Low evergreen groundcover, Red Accent Massings



Fullerton Road Frontage



Chitalpa Tree





Perimeter Plant Palette



'Tuscarora' Crape Myrtle



Southern Live Oak



Lomandra 'Breeze'



Ivy Geranium



Escallonia 'Frades' (flower)



Escallonia 'Frades' (foliage)



'Jack Evans' Indian Hawthorn



Bronze Flax



Tree Aloe



Yeddo Hawthorn (form)



Yeddo Hawthorn (foliage)

## Goals & Key Points for Central Quad Area

- Activate the entire space — quad and courtyards
- Provide shaded seating areas — “living rooms”
- Create a variety of seating/shade experiences/options
- “Green Up” the quad
- Provide a large, open area for larger gatherings/sports
- Maintain open routes for circulation





'Tuscarora' Crape Myrtle



Bronze Flax



Southern Live Oak



Sawleaf Zelkova



Variegated Fortnight Lily



Lomandra 'Breeze'



Yeddo Hawthorne



Star Jasmine





Permeable concrete pavers



Cast-in-place concrete seat wall



Paver color blends



Hand seeded aggregate concrete paving





Entry plaza at Gym & Food Service



Quad area looking toward 'wave' lunch shelter



Courtyard area off main quad



'Wave' lunch shelter



## Design Approach

- Seating opportunities – CIP seat walls, benches, raised planters
- Shade Providers – Mix of deciduous & evergreen trees and tensile structures
- Colored pavers & seeded aggregate concrete visually breaks up sea of gray concrete
- Smaller 'living rooms' connected by larger paving 'bars'





Entry Areas

## Murrieta Valley High School — Exterior Renovation

**NTD**  
ARCHITECTURE

**NOWELL & ASSOCIATES**  
Landscape Architecture





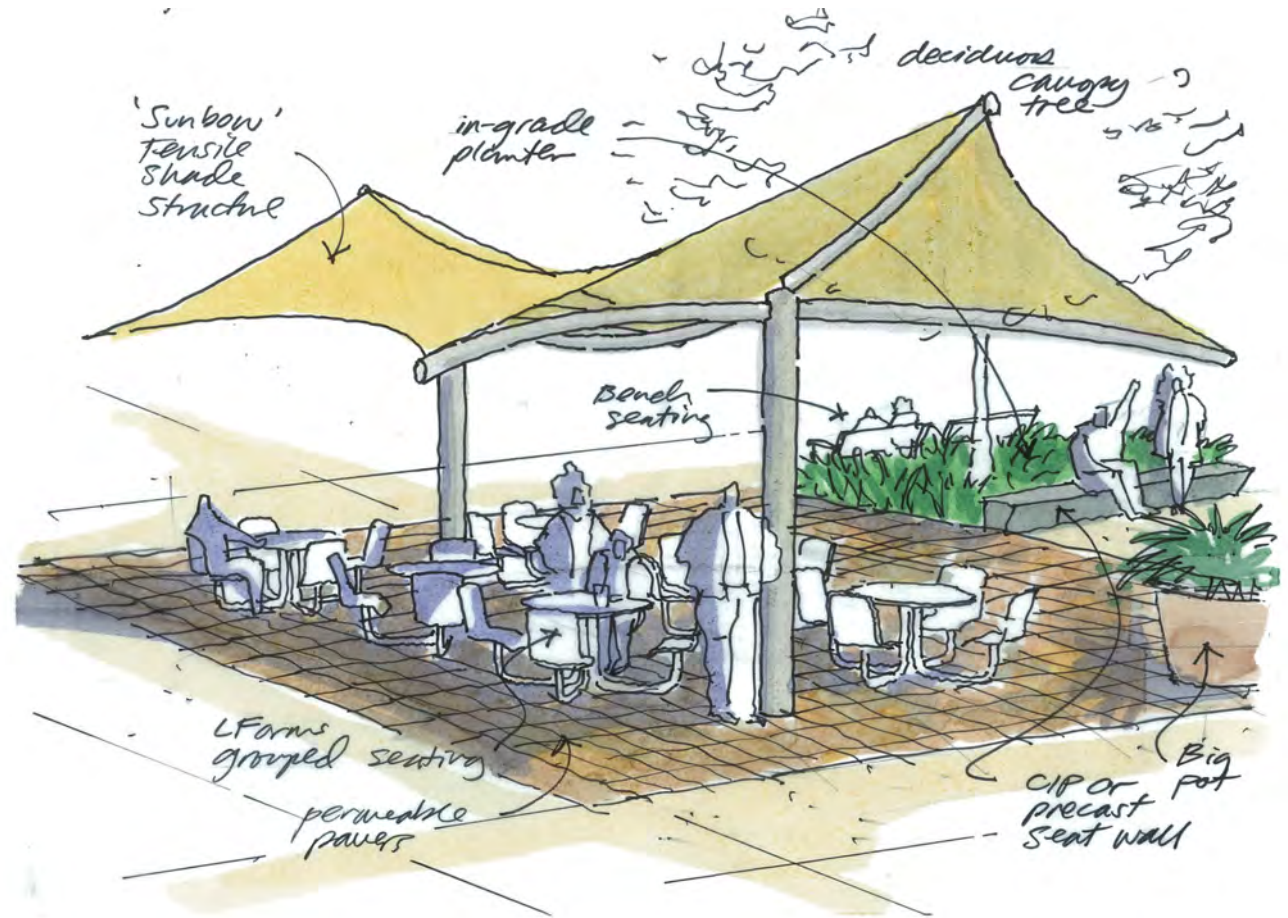
# Murrieta Valley High School — Exterior Renovation





## Living Rooms

- Tensile shade structure
- Fixed seating groups
- Shade Trees
- CIP seat walls
- Oversized potted plant





Sunbow 24' x 36' tensile shade structure



Carousel fixed seating group



Sunbird 16' x 22' tensile shade structure



Balance bench



Cascade pot





## Design Approach

- Open Area for Activities (Functional Quad)
- Informal Perimeter Seating
- Shaded Edges



## Loop Road Area

### Design Approach

- Fill in Missing Layer of Scale
- Plant Medium Height Crape Myrtle Trees between Every Other Column
- Replace Underperforming Shrubs & Groundcovers with Simple hedge and Low Foreground Shrub



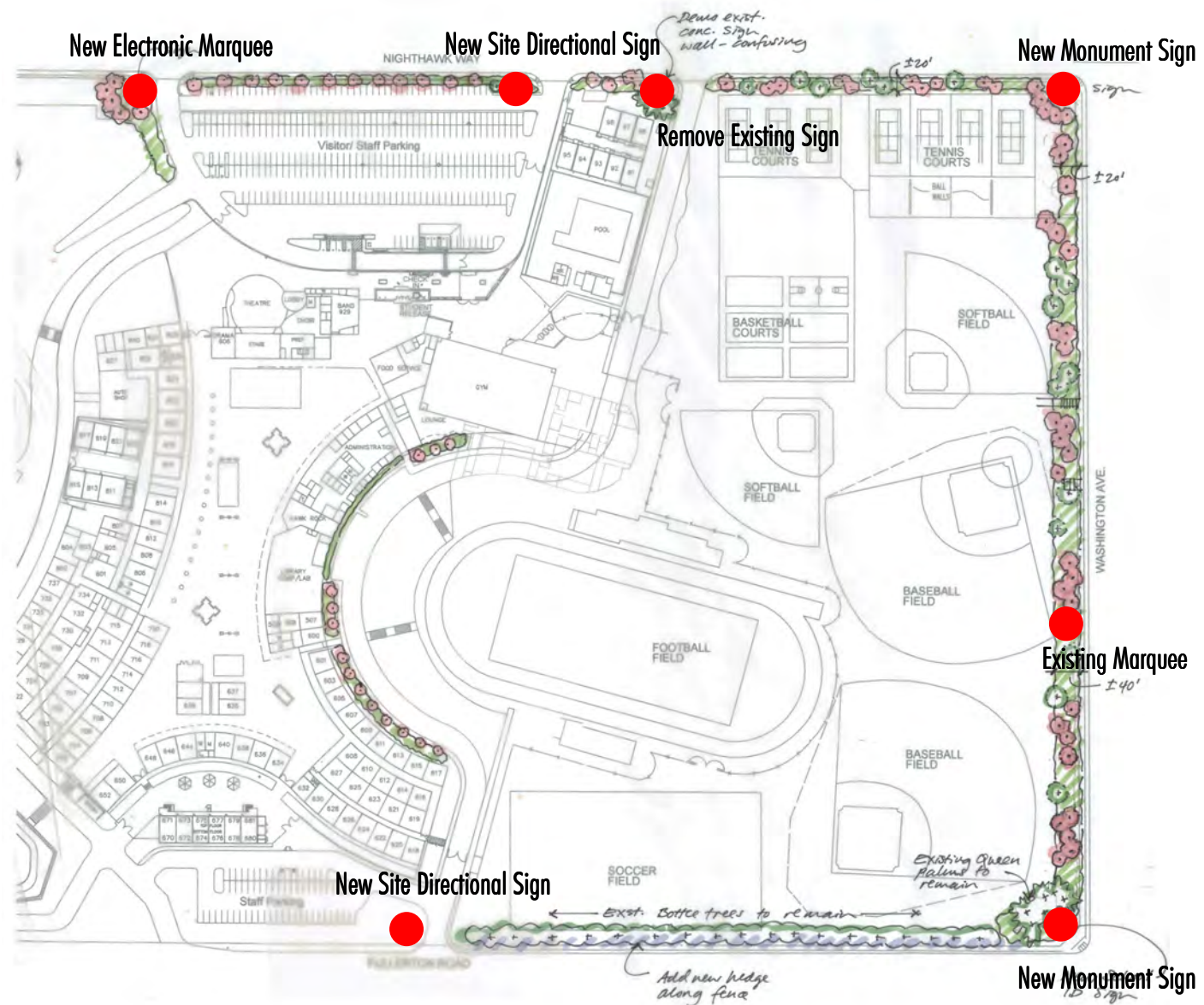


# Signage



## Site Perimeter Signage

- New Monument Signs for Clear Wayfinding
- New Vehicular Site Signage
- New Electronic Marquee
  - Locate at Main Entry
  - Keep Existing Sign along Washington

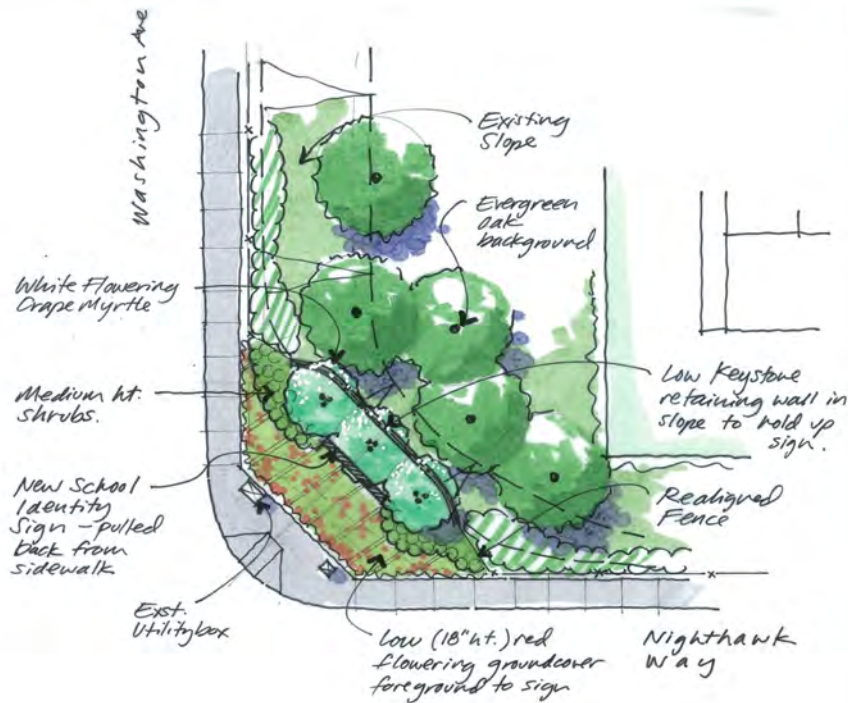


## Marquee Options

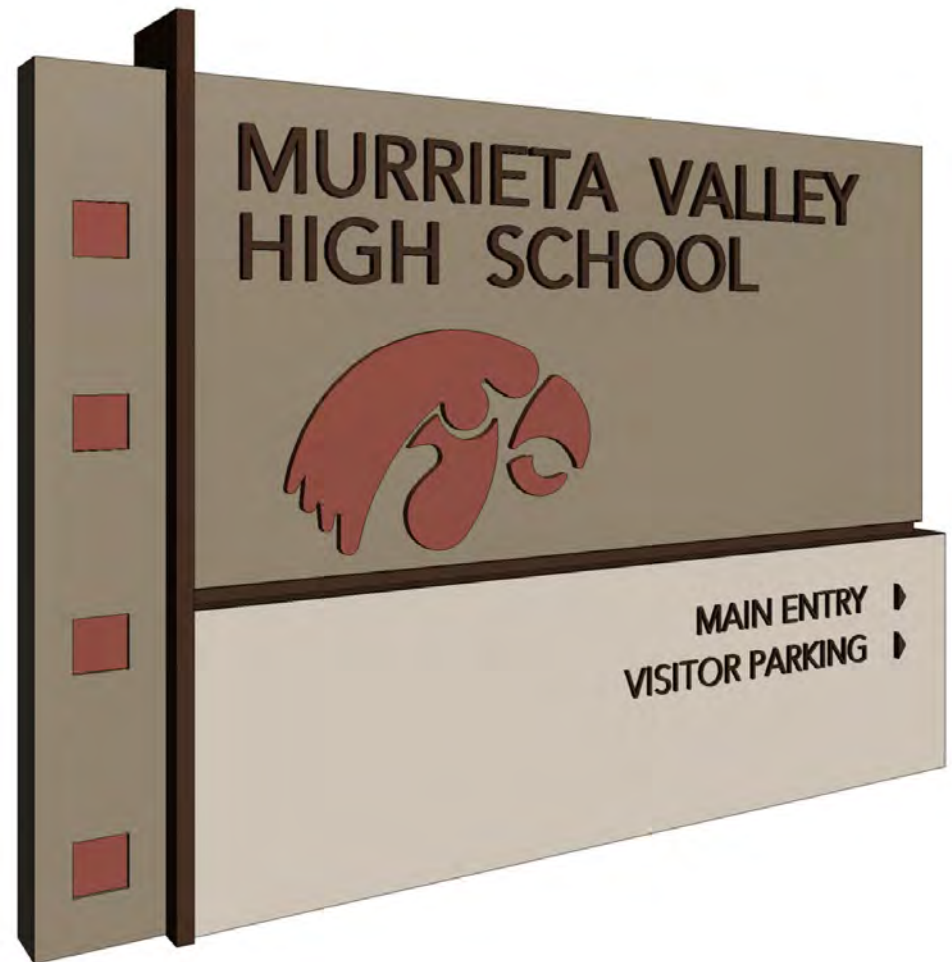
- Size (3'-4" — 6'-0" tall x 9'-0" - 11'-2" wide)
- Lines (3 or 6 of 9" characters)
- Monochrome/ Full Color
- Single Face/ Double Face
- Cost (\$52,000 - \$91,000)







Site Directional Sign — (5' wide x 3'-6" tall)

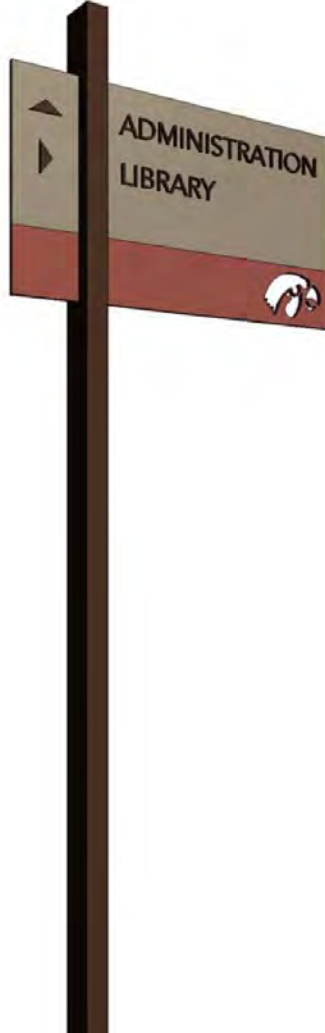


Monument Sign — (11' wide x 8' tall)

## Murrieta Valley High School — Exterior Renovation

**NTD**  
ARCHITECTURE

**NOWELL & ASSOCIATES**  
Landscape Architecture



Quad Directional Post Mounted Signage —  
(3' wide x 1'-8" tall & 7' clear)



Building Signage — (3' wide x 1'-8" tall)



Quad Directional Sign — (4' wide x 2'-10" tall)

**NTD**  
ARCHITECTURE

**NOWELL & ASSOCIATES**  
Landscape Architecture







# Murals





**Murrieta Valley High School** — Exterior Renovation



**Murrieta Valley High School** — Exterior Renovation



**Murrieta Valley High School** — Exterior Renovation





**Murrieta Valley High School** — Exterior Renovation



**Murrieta Valley High School** — Exterior Renovation



**Murrieta Valley High School** — Exterior Renovation





## Murrieta Valley High School — Exterior Renovation

**NTD**  
ARCHITECTURE

NOWELL & ASSOCIATES  
Landscape Architecture



**Murrieta Valley High School** — Exterior Renovation

# Exterior Color Scheme







Before

**Murrieta Valley High School** — Exterior Renovation

**NTD**  
ARCHITECTURE

**NOWELL & ASSOCIATES**  
Landscape Architecture





After

**Murrieta Valley High School** — Exterior Renovation

**NTD**  
ARCHITECTURE

**NOWELL & ASSOCIATES**  
Landscape Architecture



Before

## Murrieta Valley High School — Exterior Renovation

**NTD**  
ARCHITECTURE

**NOWELL & ASSOCIATES**  
Landscape Architecture



After

**Murrieta Valley High School** — Exterior Renovation

**NTD**  
ARCHITECTURE

**NOWELL & ASSOCIATES**  
Landscape Architecture





Before

## Murrieta Valley High School — Exterior Renovation

**NTD**  
ARCHITECTURE

NOWELL & ASSOCIATES  
Landscape Architecture





After

**Murrieta Valley High School** — Exterior Renovation

**NTD**  
ARCHITECTURE

**NOWELL & ASSOCIATES**  
Landscape Architecture



Before

## Murrieta Valley High School — Exterior Renovation

**NTD**  
ARCHITECTURE

**NOWELL & ASSOCIATES**  
Landscape Architecture



After

**Murrieta Valley High School** — Exterior Renovation

**NTD**  
ARCHITECTURE

**NOWELL & ASSOCIATES**  
Landscape Architecture





Before

## Murrieta Valley High School — Exterior Renovation

November 30, 2010

**NTD**  
ARCHITECTURE

NOWELL & ASSOCIATES  
Landscape Architecture



After

**Murrieta Valley High School** — Exterior Renovation

November 30, 2010

**NTD**  
ARCHITECTURE

**NOWELL & ASSOCIATES**  
Landscape Architecture





Before

## Murrieta Valley High School — Exterior Renovation

November 30, 2010



NOWELL & ASSOCIATES  
Landscape Architecture





After

## Murrieta Valley High School — Exterior Renovation

November 30, 2010

**NTD**  
ARCHITECTURE

**NOWELL & ASSOCIATES**  
Landscape Architecture



Before

## Murrieta Valley High School — Exterior Renovation

November 30, 2010

**NTD**  
ARCHITECTURE

NOWELL & ASSOCIATES  
Landscape Architecture





After

## Murrieta Valley High School — Exterior Renovation

November 30, 2010

**NTD**  
ARCHITECTURE

**NOWELL & ASSOCIATES**  
Landscape Architecture