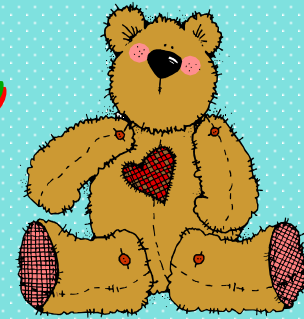


Clue Bags



- We have weekly letter themes that encourage the sharing of a “clue bag”. Clue bags are an optional activity *in the weekly homework* and the item *must* start with the beginning letter we are studying that week. A clue bag worksheet can be printed out for this activity from our class website. For a clue bag, the item must be in a paper bag that is stapled or taped closed and the child is to give 3 clues to help the class in guessing what is in the bag. Each child may do one clue bag a week. This is our educational way to do “show and tell” or sharing.
- Please, do not allow toys to come to school (unless it is in a “Clue Bag” for the week and has that special attribute).