

Parent Signature

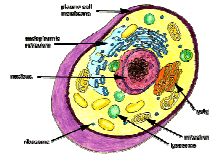
Due Date: _____

Project Completion

Due Date: _____

Chapter 7-Cells

Extra Credit



Choose one of the following

Each assignment is worth a

25 extra credit points that can be earned by thoroughly completing the assignment. This extra

credit paper must be returned signed by a parent or guardian by the date indicated above. You

must return this form whether you plan on doing the assignment or not!

assignments.
maximum of

- ☐ YES! I plan on completing the assignment that I've circled or crossed-out below.
- ☐ NO! I don't plan on completing the assignment and, further, I understand that this may be the only extra credit offered to me during the 1st semester.

☐ _____

student signature parent signature

Choose either a plant or animal cell and model the cell structure and organelles through any recycled or edible material that you wish. Include labels and a summary of the functions of each organelle.	Design a cell brochure depicting the cell as an amusement park or travel destination. Include pictures, a map, a list of attractions (vacuoles = lockers) and why each organelle would be exciting to visit.	Write a song about a cell or the cell's organelles. The song can go with original music and / or an already developed rhythm or beat. Turn in the song written out on a sheet of paper and include a CD or tape with the music.
Discuss the relationship between structure and function using 10 different cells found in the human body.	STUDENT CHOICE (APPROVED BY TEACHER)	Design and film a commercial depicting a cell as a traveling destination, amusement park, or a commercial product. The film can use humor, drama, and action to attract their "customers".
Design a review game over the cell unit to be played at one point in the class. The game could be a board game or a Powerpoint game like computer Jeopardy.	Design a concept map over the cell unit starting with either an animal or plant cell as the main theme. Be sure to depict the plasma membrane and organelles found within the cell of your choosing.	Design a poster describing the differences between a plant and animal cell. The poster should be hand-drawn and in color with words and drawings that compare and contrast the 2 cell types.