

CLASS OF 2022 YEARBOOK RECOGNITION ADS

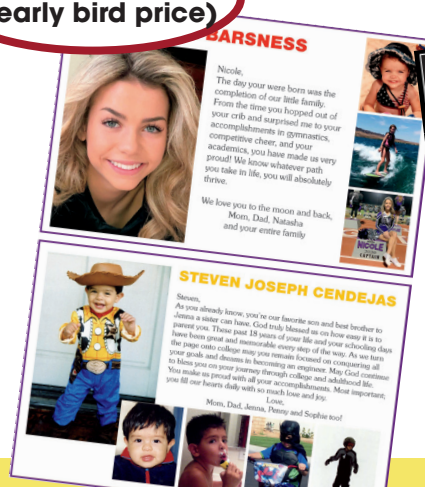
the
yearbook
company
Ads for Grads

MAKE SURE YOUR FAVORITE SENIOR IS FEATURED IN THE 2022 YEARBOOK!
Congratulate your special graduate in the yearbook in your own words and pictures!

Due date is POSTMARKED by:

Nov 9th
(early bird price)

or Dec 9th (regular deadline) **or the LAST & FINAL CHANCE**
DATE JAN. 25th



(ad styles and layouts are subject to change from year to year in keeping with the unique design and feel of each year's book)

IMPORTANT INFORMATION

Mail EVERYTHING together: photos, message, order form and payment in ONE package postmarked by the deadline.

Or order online at: www.TheYearbookCompany.com by midnight on the day of the deadline.

We reserve the right to edit or remove material inappropriate for a school yearbook such as but not limited to: firearms, inappropriate hand gestures, drugs or drug references, alcohol, and nudity (even baby bottoms) without prior notification.

TEXT

(See ad formats online or order form for character count guidelines.)

- Type your message on white paper, typed in a plain font
- OR
- Submit a word doc or .txt file on a CD or jump drive.

PHOTOS

(Photos will be sized to fit.)

HARD COPY PHOTOS:

- Submit the exact number of photos to match your format.
- Write position number and student's name on each photo.
- Do not submit computer printouts on regular paper.
- DO NOT fold or cut photos. Careful of wet ink!

DIGITAL PHOTOS:

- Submit 300 DPI .jpg files on a CD or jump drive.
- File name should be the student's name and photo position number. (ex John Doe 2.jpg)

GENERAL PHOTO GUIDELINES:

- NO photos from websites or screen shots from cell phones, no watermarked photos, no copyrighted photos.
- We cannot fix photos (blurry, creased, fingerprinted, etc.)

CUSTOM ADS

HARD COPY AD:

- Submit a perfect, "camera-ready" ad by mail. The ad looks perfect because you've glued/taped everything in its EXACT place and EXACT size (see specs on order form).

OR

- Submit a photo-quality printout of the ad on glossy photo paper, made to be the EXACT size of the ad (see specs on order form).

DIGITAL AD:

- Must be 300 DPI actual size .jpg files.
- Please DO NOT use Microsoft Word, PowerPoint, or online photo sharing tools to create your ad due to poor resolution. If you use these programs, submit a photo-quality printout of the ad on glossy photo paper, made to be the EXACT size of the ad (see specs on order form).

GENERAL CUSTOM AD GUIDELINES:

- Include your child's name on your artwork.
- Do not put any wording or faces on the very edge.
- We cannot create custom ads for you.

SUBMITTING

DO NOT SEND ANYTHING TO THE SCHOOL

Mail all materials and payment to:
Murrieta Mesa High School Senior Ads
The Yearbook Company
3900 Market Street, Suite 230
Riverside, CA 92501

OR if you are technology savvy, you can submit **everything** online at www.TheYearbookCompany.com (it's not possible to just pay online- all your photos and message must be submitted at that time as well.)

for more information and for answers to frequently asked questions, please visit

www.theyearbookcompany.com or call 951-274-9561

(Please note that a recognition ad and the pre-order of a yearbook are two separate purchases)

Ads for Grads 2022 order form

Murrieta Mesa High School, Murrieta, CA

the
yearbook
company

| STEP 1 Place an "X" in the boxes to indicate the size and format of ad from the choices below that you are purchasing. | | early-bird price if postmarked by November 9 | price if postmarked by December 9 | final deadline* price if postmarked by January 25 |
|--|---|---|---|--|
| ALL ads are in FULL COLOR! | | | | |
| <input type="checkbox"/> 1/8 page ad | <input type="checkbox"/> Format "A5" <input type="checkbox"/> Format "B5" | \$65 | \$75 | \$90 |
| <input type="checkbox"/> 1/4 page ad | <input type="checkbox"/> Format "J5" <input type="checkbox"/> Format "D5" <input type="checkbox"/> Format "E5" <input type="checkbox"/> CUSTOM * <small>for custom, you must provide camera-ready art. The ad must fit within an 4 inch wide by 5.25 inch tall box</small> | \$115 | \$135 | \$160 |
| <input type="checkbox"/> 1/2 page ad | <input type="checkbox"/> Format "N5" <input type="checkbox"/> Format "F5" <input type="checkbox"/> Format "G5" <input type="checkbox"/> Format "K5" <input type="checkbox"/> CUSTOM * <small>for custom, you must provide camera-ready art. The ad must fit within an 8.5 inch wide by 5.5 inch tall box</small> | \$195 | \$220 | \$245 |
| <input type="checkbox"/> Full page ad | <input type="checkbox"/> Format "H5" <input type="checkbox"/> Format "T5" <input type="checkbox"/> Format "O5" <input type="checkbox"/> CUSTOM * <small>for custom, you must provide camera-ready art. The ad must fit within an 8.5 inch wide by 11 inch tall box</small> | \$350 | \$380 | \$415 |

Visit www.theyearbookcompany.com to see full size formats with detailed descriptions and character counts.

| 1/8 & 1/4 PAGE DESIGNS | HALF PAGE DESIGNS | HALF PAGE DESIGNS | FULL PAGE DESIGNS | FULL PAGE DESIGNS | FULL PAGE DESIGNS |
|---|---|---|--|--|--|
| <div>Student Name A5 45 words</div> <div>Student Name 35 words B5</div> <div>Student Name D5 75 words</div> <div>Student Name E5 50 words</div> | <div>Student Name N5 140 words</div> <div>Student Name F5 120 words</div> | <div>Student Name G5 120 words</div> <div>Student Name K5 120 words</div> | <div>Student Name H5 100 words</div> | <div>Student Name T5 140 words</div> | <div>Student Name O5 150 words</div> |

All deadlines are postmark dates... you only need to either mail or upload your order (photos and message) by that day.

If you are good with technology, you can submit and purchase your dedication online by uploading digital/scanned (300 dpi) .jpg images and your message. at www.TheYearbookCompany.com (service fee applies)

STEP 2 Fill out student name and parent contact info. Decide on your photos and type your message.

Name of person purchasing ad (name on check or credit card):

Address:

City: State Zip

Daytime contact phone: ()

STUDENT'S first and last name as you would like it to appear on ad:

(we will not add the name to custom ads but we do need the name for recordkeeping and indexing purposes)

of photos enclosed is this a surprise? yes / no

☐ I would like my photos returned so I am enclosing a self-addressed, stamped, appropriately-sized envelope. (Otherwise your photos won't be returned.)

Please note, however, that we cannot guarantee the safety of your photos once we have put them in the mail, so please make duplicates of all irreplaceable photos. PHOTOS WILL BE RETURNED AFTER ALL YEARBOOK DISTRIBUTIONS HAVE CONCLUDED, IN THE SUMMER.

(Sorting and mailing back photos from tens of thousands of ads takes several months. Thank you for your patience.)

Yearbook ad sales are a fund-raiser for your child's school and are non-refundable. The school and their yearbook program thank you for your support!

STEP 3 Fill out payment info. Put this form, your photos & your message in an envelope and mail to us.

PLEASE MAKE CHECKS
PAYABLE TO:

the
yearbook
company

☐ I've enclosed a check in the amount of: \$
returned checks will be subject to a \$25.00 fee Check #

☐ I am paying by credit card: ☐ Visa ☐ Mastercard

\$ exp date: / cvv code:

? the cvv code is the 3 digit security code on the back of the credit card

for credit card transactions, add a \$5.00 convenience fee for 1/8 and 1/4 ads and \$10.00 for half and full page ads

DO NOT SEND ANY MATERIALS TO THE SCHOOL.

YOU MUST MAIL EVERYTHING TO:
Murrieta Mesa High School Senior Ads
The Yearbook Company
3900 Market Street, Suite 230
Riverside, CA 92501

* any orders received after the final postmark deadline will be accepted on a first-come, first-served basis as long as there is still space available (we can make no guarantees regarding space). But you must add a \$25 late fee to the regular price.

for more information and for answers to frequently asked questions, please visit www.TheYearbookCompany.com or call 951-274-9561

To see full-size versions of these and other formats, visit www.theyearbookcompany.com and log on to your school.

| | | |
|---|---|---|
| <p>Student Name Here</p> <p>Photo 1</p> <p>VERTICAL</p> <p>FORMAT A5</p> <p>Parents, We will type your message to fit in this space. Limit your number of words to 45 or less (250 characters). Word counts are an approximation of your allowable characters. If you have a horizontal photo use format "B5."</p> | <p>Student Name Here</p> <p>Parents, The message to your student will be typeset to fit in this space. Your message must be typed on a separate piece of white paper, and not exceed 85 words, (470 characters) including the "signature" at the end. Word counts are an approximation of your allowable characters. Your photo will be reduced or enlarged to fit in this space. This box can be adjusted to accommodate a horizontal photo.</p> <p>Photo 1</p> <p>VERTICAL OR HORIZONTAL</p> <p>Original photos work best, however we will accept good quality copies on photo paper only.</p> <p>FORMAT J5</p> | <p>Student Name Here</p> <p>Photo 1</p> <p>Write this number on back of photo. Be careful of wet ink.</p> <p>FORMAT N5</p> <p>VERTICAL PHOTO ONLY</p> <p>Original photos work best, however we will accept good quality copies on photo paper only.</p> <p>Parents, Your message to your student will be typeset to fit in this space. Your message must be typed on a separate piece of white paper. The total length of the message should not exceed 140 words, (770 characters) including the "signature" at the end. Word counts are an approximation of your allowable characters. Your photos will be reduced or enlarged to fit in these spaces. Original photos work best, however we will accept good quality copies on photo paper. Horizontal photos can be used in photo boxes 2 & 3.</p> <p>Photo one must be a vertical photo only.</p> <p>HALF PAGE DESIGN</p> <p>Photo 2</p> <p>VERTICAL OR HORIZONTAL</p> <p>Write this number on back of photo. Be careful of wet ink.</p> <p>Photo 3</p> <p>VERTICAL OR HORIZONTAL</p> <p>Write this number on back of photo. Be careful of wet ink.</p> |
| <p>Student Name Here</p> <p>Parents, We will type your message to fit in this space. Limit your number of words to 35 or less (200 characters). Word counts are an approximation of your allowable characters.</p> <p>Photo 1</p> <p>HORIZONTAL</p> <p>FORMAT B5</p> | | |
| <p>Student Name Here</p> <p>Dear Parents, Your message to your student will be typeset to fit in this space. The total length should not exceed 75 words, (400 characters) including the "signature" at the end. Word counts are an approximation of your allowable characters. Though we can crop and/or resize horizontal photos to fit in the frames, vertical photos or photos that can be cropped vertically do look best. If you have a horizontal photo use box 2.</p> <p>Photo 1</p> <p>VERTICAL PHOTO ONLY</p> <p>Original photos work best, however we will accept good quality copies on photo paper only.</p> <p>Be careful of wet ink.</p> <p>FORMAT D5</p> <p>Photo 2</p> <p>VERTICAL OR HORIZONTAL</p> <p>Write this number on back of photo.</p> | <p>Student Name Here</p> <p>Parents, Your message to your student will be typeset to fit in this space. Your message must be typed on a separate piece of white paper, and not exceed 50 words, (275 characters) including the "signature" at the end. Word counts are an approximation of your allowable characters. <i>Please do NOT submit horizontal photos.</i></p> <p>Photo 1</p> <p>FORMAT E5</p> <p>VERTICAL PHOTO ONLY</p> <p>Original photos work best, however we will accept good quality copies on photo paper only.</p> <p>Photo 2</p> <p>VERTICAL OR HORIZONTAL</p> <p>Photo 3</p> <p>VERTICAL OR HORIZONTAL</p> | <p>Student Name Here</p> <p>Photo 1</p> <p>Write this number on back of photo. Be careful of wet ink.</p> <p>FORMAT F5</p> <p>VERTICAL PHOTO ONLY</p> <p>Original photos work best, however we will accept good quality copies on photo paper only.</p> <p>Parents, Your message to your student will be typeset to fit in this space. Your message must be typed on a separate piece of white paper. The total length of the message should not exceed 120 words, (660 characters) including the "signature" at the end. Word counts are an approximation of your allowable characters. Your photos will be reduced or enlarged to fit in these spaces. Original photos work best, however we will accept good quality copies on photo paper. Horizontal photos can be used in photo boxes 2, 3 & 4.</p> <p>Photo one must be a vertical photo only.</p> <p>HALF PAGE DESIGN</p> <p>Photo 2</p> <p>VERTICAL OR HORIZONTAL</p> <p>Write this number on back of photo. Be careful of wet ink.</p> <p>Photo 3</p> <p>VERTICAL OR HORIZONTAL</p> <p>Write this number on back of photo. Be careful of wet ink.</p> <p>Photo 4</p> <p>VERTICAL OR HORIZONTAL</p> <p>Write this number on back of photo. Be careful of wet ink.</p> |

All deadline dates are postmark dates only. (That means your order form, photos and message must be in the mail that day or submitted online by midnight.)

To see full-size versions of these and other formats, visit www.theyearbookcompany.com and log on to your school.

| | | | | | |
|--|---|--|--|--|--|
| <p>Photo 1</p> <p>FORMAT G5</p> <p>VERTICAL PHOTO ONLY</p> <p>Original photos work best, however we will accept good quality copies on photo paper only.</p> | <p>Student Name Here</p> <p>Parents,</p> <p>Your message to your student will be typeset to fit in this space. Your message must be typed on a separate piece of white paper. The total length of the message should not exceed 120 words, (660 characters) including the “signature” at the end. Word counts are an approximation of your allowable characters. Your photos will be reduced or enlarged to fit these spaces. Original photos work best, however we will accept good quality copies on photo paper. Horizontal photos can be used in photo boxes two through five.</p> <p>Photo one must be a vertical photo only.</p> | | | | |
| <p>HALF PAGE DESIGN</p> | <table border="1"><tr><td><p>Photo 2</p><p>VERTICAL OR HORIZONTAL (if you have only one horizontal photo, assign it to this box for your ad to look best)</p><p>Write this number on back of photo. Be careful of wet ink.</p></td><td><p>Photo 3</p><p>VERTICAL OR HORIZONTAL</p><p>Write this number on back of photo. Be careful of wet ink.</p></td><td><p>Photo 4</p><p>VERTICAL OR HORIZONTAL</p><p>Write this number on back of photo. Be careful of wet ink.</p></td><td><p>Photo 5</p><p>VERTICAL OR HORIZONTAL</p><p>Write this number on back of photo. Be careful of wet ink.</p></td></tr></table> | <p>Photo 2</p> <p>VERTICAL OR HORIZONTAL (if you have only one horizontal photo, assign it to this box for your ad to look best)</p> <p>Write this number on back of photo. Be careful of wet ink.</p> | <p>Photo 3</p> <p>VERTICAL OR HORIZONTAL</p> <p>Write this number on back of photo. Be careful of wet ink.</p> | <p>Photo 4</p> <p>VERTICAL OR HORIZONTAL</p> <p>Write this number on back of photo. Be careful of wet ink.</p> | <p>Photo 5</p> <p>VERTICAL OR HORIZONTAL</p> <p>Write this number on back of photo. Be careful of wet ink.</p> |
| <p>Photo 2</p> <p>VERTICAL OR HORIZONTAL (if you have only one horizontal photo, assign it to this box for your ad to look best)</p> <p>Write this number on back of photo. Be careful of wet ink.</p> | <p>Photo 3</p> <p>VERTICAL OR HORIZONTAL</p> <p>Write this number on back of photo. Be careful of wet ink.</p> | <p>Photo 4</p> <p>VERTICAL OR HORIZONTAL</p> <p>Write this number on back of photo. Be careful of wet ink.</p> | <p>Photo 5</p> <p>VERTICAL OR HORIZONTAL</p> <p>Write this number on back of photo. Be careful of wet ink.</p> | | |

| | | |
|---|--|---|
| <p>Photo 1</p> <p>VERTICAL PHOTO ONLY</p> <p>Original photos work best, however we will accept good quality copies on photo paper only.</p> | <p>Photo 2</p> <p>VERTICAL</p> <p>Write this number on back of photo. Be careful of wet ink.</p> | <p>First Name Here Last Name Here</p> <p>Parents,</p> <p>Your message to your student will be typeset to fit in this space. Your message must be typed on a separate piece of white paper. The total length of the message should not exceed 120 words, (660 characters) including the “signature” at the end. Word counts are an approximation of your allowable characters. Your photos will be reduced or enlarged to fit these spaces. Original photos work best, however we will accept good quality copies on photo paper. Horizontal photos can be used in photo boxes 2,3 & 6</p> <p>FORMAT K5</p> <p>Photo one must be a vertical photo only.</p> |
| <p>Photo 4</p> <p>VERTICAL</p> <p>Write this number on back of photo. Be careful of wet ink.</p> | <p>Photo 5</p> <p>VERTICAL</p> <p>Write this number on back of photo. Be careful of wet ink.</p> | <p>Photo 6</p> <p>VERTICAL OR HORIZONTAL</p> <p>Write this number on back of photo. Be careful of wet ink.</p> |
| <p>HALF PAGE DESIGN</p> | | |

| | |
|---|---|
| <p>Photo 1</p> <p>Write this number on back of photo. Be careful of wet ink.</p> <p>FORMAT H5</p> <p>VERTICAL</p> <p>Original photos work best, however we will accept good quality copies on photo paper only.</p> | <p>Student Name Here</p> |
| <p>Photo 2</p> <p>Write this number on back of photo. Be careful of wet ink.</p> <p>VERTICAL</p> <p>Original photos work best, however we will accept good quality copies on photo paper only.</p> | <p>Photo 3</p> <p>Write this number on back of photo. Be careful of wet ink.</p> <p>VERTICAL</p> <p>Original photos work best, however we will accept good quality copies on photo paper only.</p> |
| <p>Photo 4</p> <p>Write this number on back of photo. Be careful of wet ink.</p> <p>VERTICAL</p> <p>Original photos work best, however we will accept good quality copies on photo paper only.</p> | <p>Dear Parents,</p> <p>Your message to your student will be typeset to fit in this space. The total length should not exceed 100 words, (550 characters) including the “signature” at the end. Word counts are an approximation of your allowable characters. Though we can crop and/or resize horizontal photos to fit in the frames, vertical photos or photos that can be cropped vertically do look best in boxes 1-5.</p> <p>Horizontal photos must be used for boxes 6 and 7 only.</p> |
| <p>Photo 6</p> <p>Write this number on back of photo. Be careful of wet ink.</p> <p>HORIZONTAL PHOTO ONLY</p> <p>Boxes 6 and 7 are designed for horizontal photos, like family photos or group shots. Do not use this space for a vertical photo.</p> | <p>Photo 5</p> <p>Write this number on back of photo. Be careful of wet ink.</p> <p>VERTICAL</p> <p>Original photos work best, however we will accept good quality copies on photo paper only.</p> |
| <p>Photo 7</p> <p>Write this number on back of photo. Be careful of wet ink.</p> <p>HORIZONTAL PHOTO ONLY</p> <p>Boxes 6 and 7 are designed for horizontal photos, like family photos or group shots. Do not use this space for a vertical photo.</p> | <p>FULL PAGE DESIGN</p> |

All deadline dates are postmark dates only. (That means your order form, photos and message must be in the mail that day or submitted online by midnight.)

To see full-size versions of these and other formats, visit www.theyearbookcompany.com and log on to your school.

| | | |
|---|---|---|
| Student Name Here | | |
| Photo 2 VERTICAL <small>Write this number on back of photo. Be careful of wet ink.</small> | Photo 1 Write this number on back of photo. Be careful of wet ink. VERTICAL PHOTO ONLY Original photos work best, however we will accept good quality copies on photo paper only. | Photo 6 VERTICAL <small>Write this number on back of photo. Be careful of wet ink.</small> |
| Photo 3 VERTICAL <small>Write this number on back of photo. Be careful of wet ink.</small> | | Photo 7 VERTICAL <small>Write this number on back of photo. Be careful of wet ink.</small> |
| Photo 4 VERTICAL <small>Write this number on back of photo. Be careful of wet ink.</small> | Parents, Your message to your student will be typeset to fit in this space. Your message must be typed on a separate piece of white paper. The total length of the message should not exceed 140 words, (770 characters) including the "signature" at the end. Word counts are an approximation of your allowable character count, you may get more or less words depending on which words you use. Original photos work best, however we will accept good quality copies on photo paper. Boxes 2, 3, 4, 5, 6, 7, 8 & 9 can be adjusted to accommodate horizontal photos Please use a vertical photo in box 1 | Photo 8 VERTICAL <small>Write this number on back of photo. Be careful of wet ink.</small> |
| Photo 5 VERTICAL <small>Write this number on back of photo. Be careful of wet ink.</small> | | Photo 9 VERTICAL <small>Write this number on back of photo. Be careful of wet ink.</small> |
| FULL PAGE DESIGN FORMAT T5 | | |

| | | |
|---|---|--|
| Student Name Here | | |
| Photo 1 Write this number on back of photo. Be careful of wet ink. VERTICAL PHOTO ONLY Original photos work best, however we will accept good quality copies on photo paper only. | Photo 2 <small>Write this number on back of photo. Be careful of wet ink.</small> | Dear Parents, Your message to your student will be typeset to fit in this space. For the type to be set in a legible size, the total length of the message should not exceed 150 words (max 825 characters), including the "signature" at the end. Word counts are an approximation based on the amount of characters available. You may get more or less words, depending on which words you use. Please note the orientation of the photo boxes in this sample layout. Though we can crop and/or resize photos to fit in the frames, vertical photos (or photos that can be cropped vertically) do look best in the vertical frames and horizontal photos look best in the horizontal spaces. Photos 5 & 6 are horizontal. FORMAT 05 FULL PAGE DESIGN |
| | Photo 3 <small>Write this number on back of photo. Be careful of wet ink.</small> | |
| Photo 4 <small>Write this number on back of photo. Be careful of wet ink.</small> | | |
| Photo 5 Horizontal Photo <small>Write this number on back of photo. Be careful of wet ink.</small> | Photo 6 Horizontal Photo <small>Write this number on back of photo. Be careful of wet ink.</small> | |
| Photo 7 VERTICAL <small>Write this number on back of photo. Be careful of wet ink.</small> | Photo 8 VERTICAL <small>Write this number on back of photo. Be careful of wet ink.</small> | Photo 9 VERTICAL <small>Write this number on back of photo. Be careful of wet ink.</small> |

All deadline dates are postmark dates only. (That means your order form, photos and message must be in the mail that day or submitted online by midnight.)